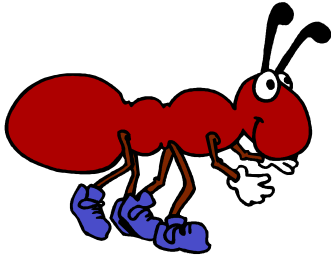


Percy's Puzzling Pet Store

At Percy's Pet Store, each animal is priced according to the letters in its name. Each letter is valued as shown in the chart.

To find the cost of an ANT, for example, you would add:



\$1 + \$14 + \$20 for a total of \$35.

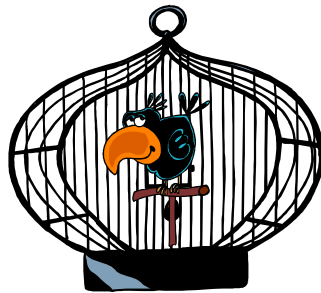
A + N + T

(Shocking price, eh?)

Now find the prices of these animals.

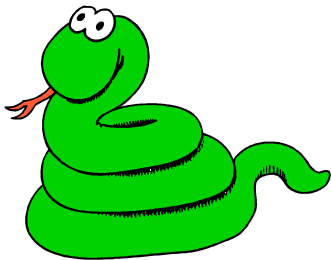
1. CAT = _____

2. BIRD = _____



3. SNAKE = _____

4. PUPPY = _____



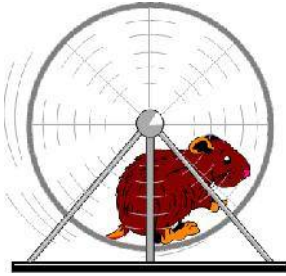
A	\$1
B	\$2
C	\$3
D	\$4
E	\$5
F	\$6
G	\$7
H	\$8
I	\$9
J	\$10
K	\$11
L	\$12
M	\$13
N	\$14
O	\$15
P	\$16
Q	\$17
R	\$18
S	\$19
T	\$20
U	\$21
V	\$22
W	\$23
X	\$24
Y	\$25
Z	\$26

5. Consider a HORSE and a HAMSTER. Which one costs more? How much more? Make an estimate, then find the answer!

HAMSTER = _____

HORSE = _____

Difference _____



6. What's the difference between a MOUSE and a MOOSE?
(You shouldn't have to do any addition to solve this one!)

Ready for some tougher brain games?

Find find the name of each of these animals.

7. C _ _ _ = \$24

8. F _ _ _ = \$42

9. What's the lowest-priced animal you can think of that's spelled with three letters?

10. Think of at least one animal that costs more than \$100. _____